



| Summary

- The Group
- Our Market
- Construction and Infrastructure sector:
 - **Trevi Division**
 - **Soilmec Division**
- Construction sites & Machines
- Milestones
- Our strengths



| The Group



Mission

We design and manufacture cutting-edge equipment, technologies and services to carry out solid and safe ground and underground works for major infrastructures that enhance people's quality of life.

Vision

Being the partner of choice for innovative, reliable and lifetime solutions in soil engineering.

Value

- Integrity
- Ethics
- Respect
- Transparency
- Passion
- Knowledge

Construction & Infrastructures

TREVI - Finanziaria Industriale S.p.A.



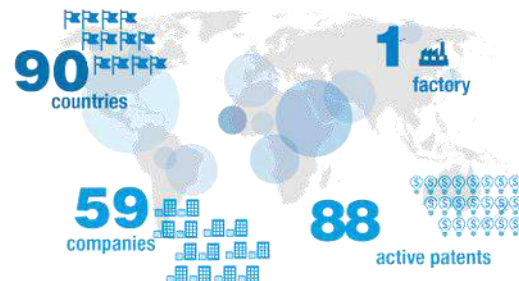
Listed on the Milan Stock Exchange since 1999



Specialist in deep foundations and geotechnical works



Equipment and services for deep foundations



| The Group - A history of over 65 years

Davide Trevisani, decides to set up the "Impresa Palificazioni Trevisani Geom. Davide" in Cesena, Italy

1957



Nigeria, the first great international work

1967

1971

Bridges on the Paraná River in Argentina, for the first time a company executes piles in the water to a depth of 74 meters



Consolidation works of the Tower of Pisa, Italy

1994

The work at the Khao Laem Dam, Thailand

1979

2007

Foundations at Ground Zero for the new World Trade Center, NY City, USA



Wolf Creek Dam rehabilitation works assigned by the US Army Corps of Engineers, USA

2008

Trevi Group plays a key role in the Costa Concordia wreck removal project, Isola del Giglio, Italy

2012

2009

In action at the LPV-111 Levees of Mississippi in New Orleans after Hurricane Katrina, USA

2011

"Cityringen", the new Metro of Copenhagen, Denmark



Foundation works for the Chacao Bridge in Chile, the longest bridge in South America

2018

2016

Trevi Group acquires the work for the securing of the Mosul Dam, Iraq



2019

Foundation works for the innovative residential complex "Four Frankfurt, Germany



Trevi executes the foundation works for the metro stations of "Grand Paris Express" Paris, France

2019 - 2020



The LINE project, Saudi Arabia

2022

2021

Foundation works for Metro Manila Skyway an elevated highway under construction, one of the most important and complex infrastructure projects of the Philippines of the last decade



North East link Melbourne, Australia



Foundation works for Arena Santa Giulia, Milano, Italy

2023



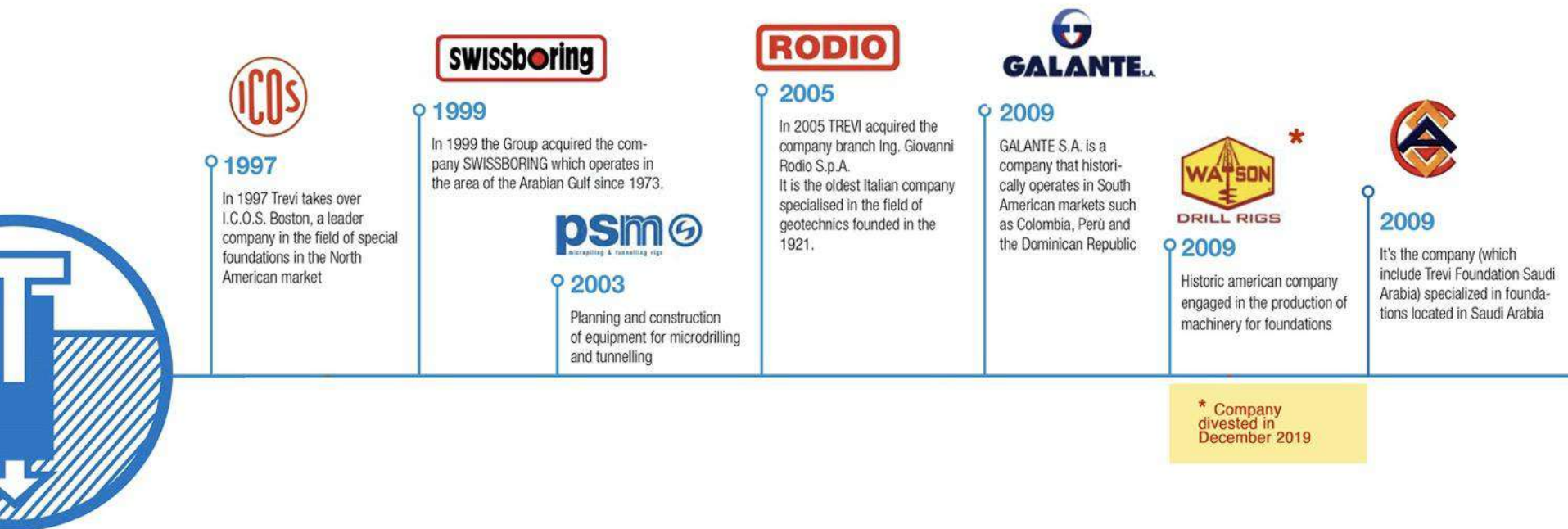
Soilmec SC-130 Tiger working at Metro C Rome, Italy

2025

2024

Foundation Works for MGH Cambridge Street project in Boston, USA





| The Group – A worldwide presence

TREVI

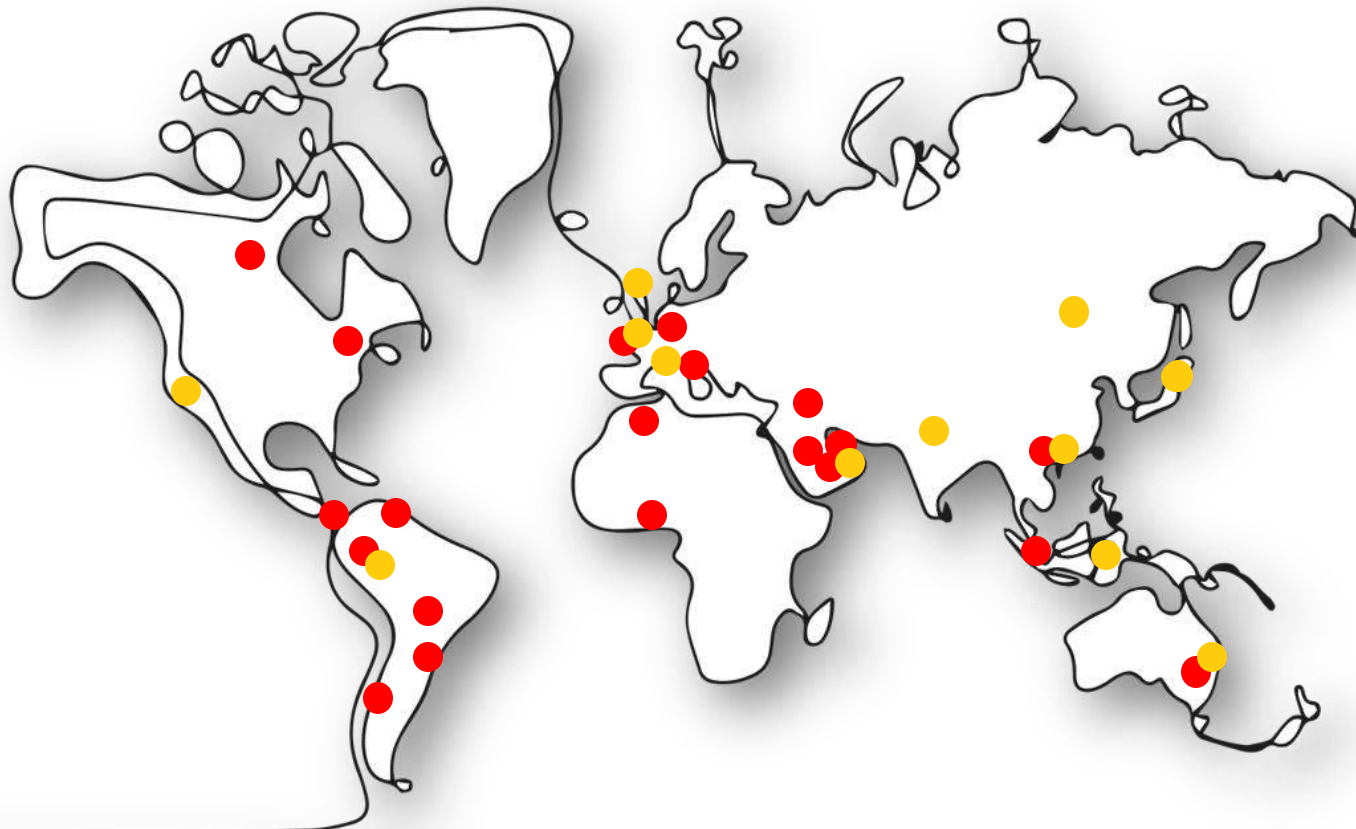


ALGERIA
ARGENTINA
AUSTRALIA
AUSTRIA
CHILE
COLOMBIA
FRANCE
HONG KONG
ITALY
MALTA
NIGERIA
PHILIPPINES
QATAR
REP. OF PANAMA
SAUDI ARABIA
SINGAPORE
TAJIKISTAN
U.A.E.
URUGUAY
USA
KUWAIT
VENEZUELA



SOILMEC

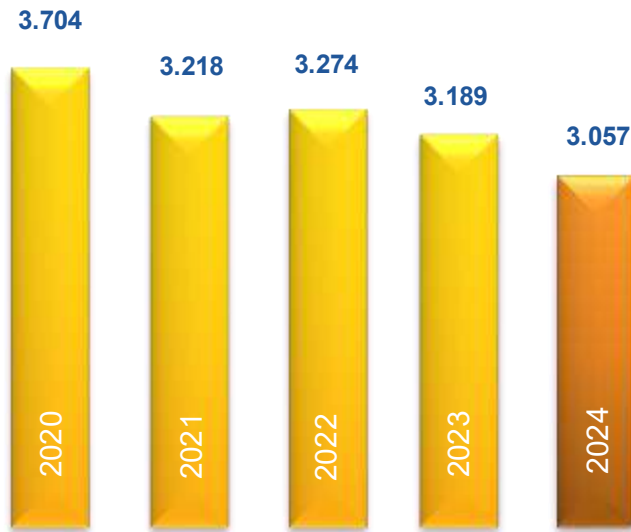
AUSTRALIA
CHINA
COLOMBIA
FRANCE
HONG KONG
INDIA
ITALY
JAPAN
SINGAPORE
U.A.E.
UK
USA



| The Group - Turnover & Employees



Consolidated turnover (Mln of Euros)



Employees

There are 43 different ethnic groups in the Trevi Group

Our market





The subsoil is one of the great resources of the future.

In the subsoil you will find many answers to the great problems affecting the metropolis and the urban centers of the emerging countries: **metro** (mobility); **skyscrapers** (habitation); **highways and high-speed railway** (viability).

Problems involving the maintenance of **dams**, the development of **communication routes**, the expansion of ports, the **securing of landfills**, and **environmental remediation** are always linked to the subsoil.

In this scenario, numerous Countries have initiated or strengthened large-scale infrastructure investment plans.

In the USA, the implementation of the Infrastructure Investment and Jobs Act (IIJA) is underway, with \$1.2 trillion planned by 2026. Along with other programs, infrastructure spending exceeds \$1.7 trillion.

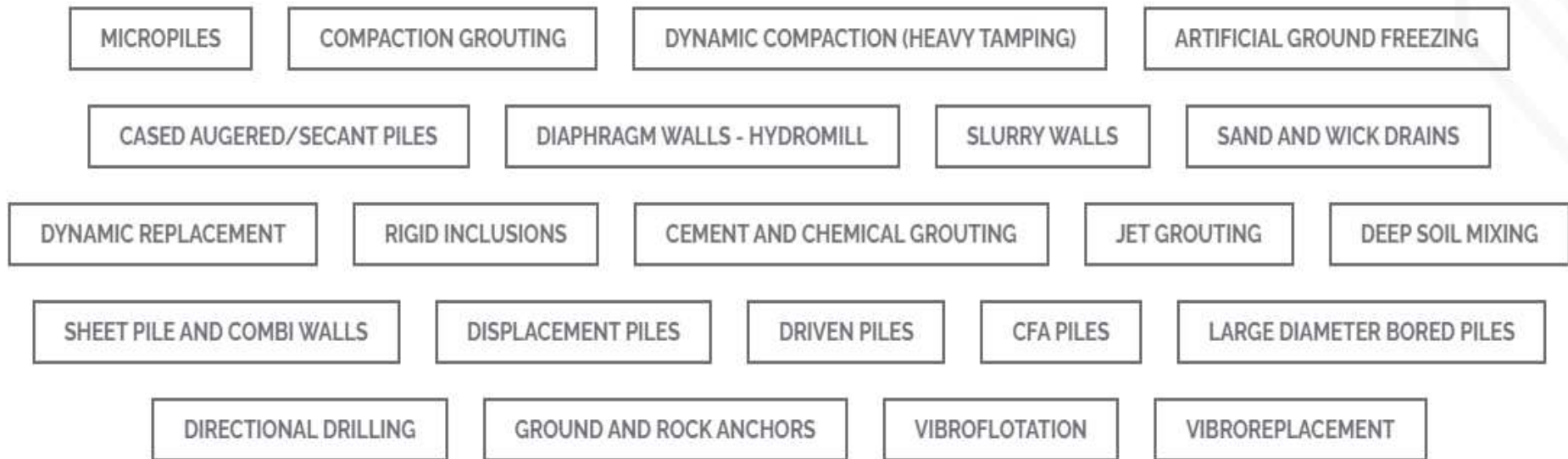
Dam maintenance: over 58,700 large dams have been built worldwide, many of which date back to the 20th century. A dam is present in almost half of the major waterways, with significant impacts on ecosystems and hydraulic safety.

26 trillion dollars should be invested in infrastructure by 2030 in Asia to make up for the current deficits. *(Financial Times)*



In Italy, the implementation of the PNRR (National Recovery and Resilience Plan) is underway, which, after the 2023 revision, allocates approximately €31.5 billion for infrastructure related to sustainable mobility, including interventions on railways, ports, roads, and integrated logistics.

Large **metro and railway** projects are currently underway in Paris, Nigeria, New York and in the Andes between Chile and Argentina. Many new projects will be started in the coming months.



...and more...

| One Group, two divisions



TREVI - Finanziaria Industriale S.p.A.



soilmeco

78% Group Revenues FY24

22% Group Revenues FY24

Underground engineering



DAMS &
LEVEES



MARINE WORKS



BRIDGE
& CAUSEWAYS



INDUSTRIAL
& CIVIL BUILDINGS



SUBWAYS,
HIGHWAYS
RAILWAYS



SPECIAL
PROJECTS



ENVIRONMENTAL
SOLUTIONS

*Two
Divisions*

Machines manufacturing



PILING RIGS



CFA RIGS



CRANES



MICRO DRILLING



HYDROMILL &
GRABS



TUNNELLING



ANCILLARIES



Recognized ability to propose **specific solutions** and optimize **design solutions**



- ✓ Recognized expertise in the design and execution of geotechnical works, even the most complex and difficult ones (*distinctive for job awarding*)
- ✓ Ability to act as «**General specialist contractor**» to contribute even to the executive design phase in order to find the best technical-executive solutions
- ✓ High production capacity supported by the availability of technologically advanced machinery and equipment
- ✓ Engineering know-how made distinctive by the combination with the engineering component (*Soilmec*)
- ✓ Synergies with Soilmec (*leverage network relationships, market intelligence and business opportunities, cross-fertilization and technological innovation*)



Established reputation of **quality and reliability on a wide range of products and services**

- ✓ Recognized ability in product innovation
- ✓ Ability to solve application and product adaptation problems deriving from the profound knowledge of the processes (*especially on rotary*)
- ✓ Knowledge of processes and market evolutions (*deriving from synergies of engineering and production know-how with the Trevi Group*)
- ✓ Quality of differentiating after-sales services that are recognized at market level (e.g., *DMS, Drilling Mate System*)
- ✓ Consolidated commercial footprint in the reference markets
- ✓ Synergies with Trevi (*leverage network relationships, market intelligence and business opportunities, cross-fertilization and technological innovation*)

| Two divisions – Our strategy: synergic solutions

A unique business model that, thanks to the continuous exchange between technological and process innovation, strengthens its leadership in the reference sectors, develops innovations and creates competitive advantage.



1) Construction site need

Request for hydraulic equipment



2) Technological answer

Study, design and production of hydraulic equipment



3) Test

Application of the directional drilling technology to the Arapuni dam (New Zealand)



4) Large-scale application in the Wolf Creek Dam in USA



Jobsites & Machines

| Trevi – Some relevant projects in 2024-2025

NEOM The Line project _ Saudi Arabia



North East Link _ Australia



Rogun dam _Tajikistan



Piazza Venezia Metro C station – Rome



Hail & Ghasha Development _ UAE



SOTC project _ USA



Florence High-Speed Rail Link (PNRR)



Boone Dam _Tennessee_USA



Metro Subway _ Manila _ Philippines



Dock Oiltanking _ Argentina



Baraki metro station _ Algeri _ Algeria



Securing Garisenda Tower _ Italy





Focus

'The Line' is a futuristic and eco-friendly project under construction in the province of Tabuk. The futuristic city will be home to one million inhabitants and will consist of a series of communities arranged in a straight line, 'The Line', that is 170 kilometers long and runs from the Red Sea coast in the north-west of the country to the hinterland, crossing deserts and mountains.



Foundations with large-diameter piles (between 1500 and 2000 mm) with an excavation depth of over 70 metres from the working surface.



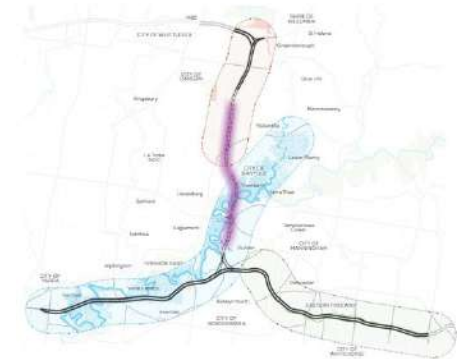


Construction of a 1.2m thick diaphragm wall with a maximum depth of 43m from the work surface. Watertightness will be ensured via sheet pile joint and water stop

Focus

Melbourne's **North East Link** consists of the design and construction of approximately 6.5km of twin three-lane tunnels and associated works, and will be **the longest road tunnel** in the state of Victoria. Project with great value in terms of **sustainability** which will lead to the creation of an essential connection for the motorway network of the city of Melbourne.

The North East Link will take 15,000 trucks off local roads every day, cutting commuters' journey times by up to **35 minutes**





Since 2022, Trevi has been involved in the consolidation and waterproofing of the rock foundations of the Rogun Dam in Tajikistan, located at an altitude of 1,300 metres above sea level. The company is currently engaged in the execution of tunnel consolidation works within the dam.



Focus

The Rogun Dam, considered the tallest dam in the world, built of rock with a clay core, is part of the Rogun Hydroelectric Power Plant Project which has 6 turbines of 600 MW each for a total installed capacity of 3,600 MW., consisting of works aimed at mitigating the risk of potential dams and returning to normal operations.





Trevi – Piazza Venezia metro station, Line C, Rome



Focus

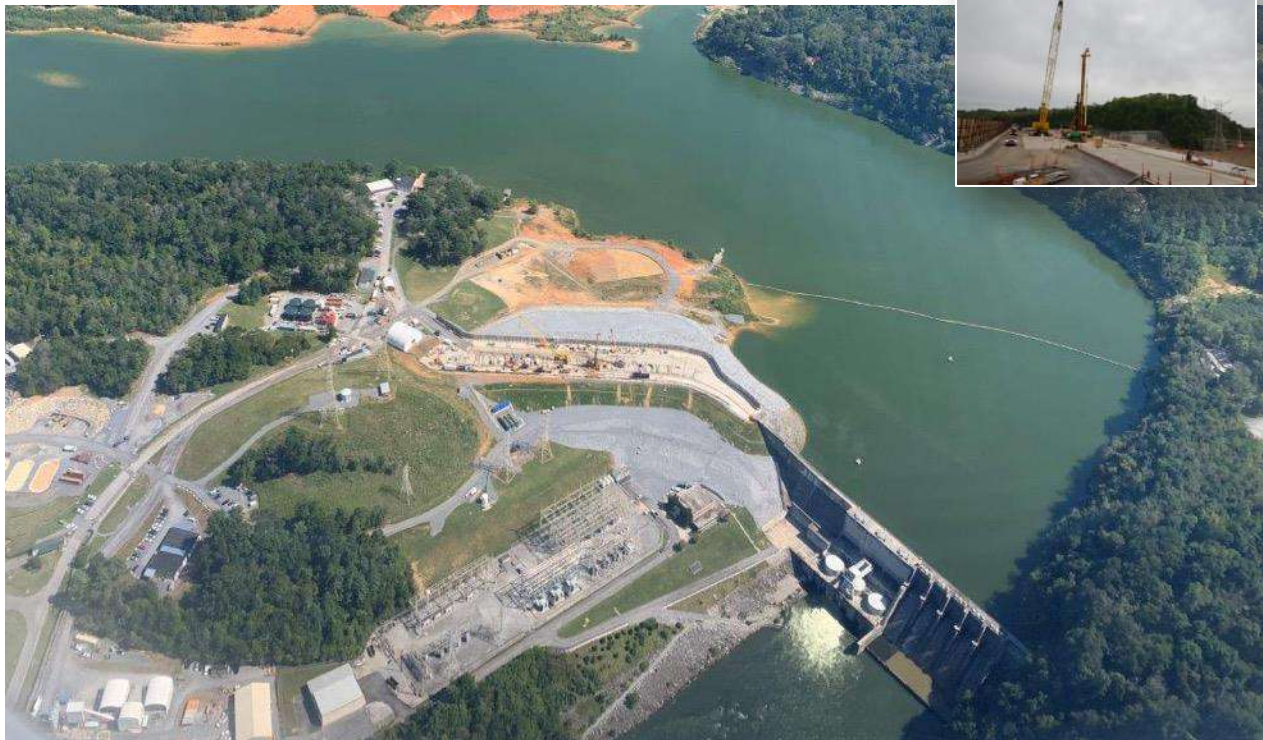
Due to the presence of an aquifer underground, it is necessary to use the soil freezing technology to carry out the required works at a depth of 60 metres.

The photo on the left shows the ground freezing test field in Piazza Venezia.



An iconic metro station in the heart of Rome is destined to become the world's most beautiful 'archaeostation'. It is the new Piazza Venezia station on Rome's metro line C, commissioned by Roma Metropolitana and built by the consortium company Metro C S.c.p.a., led by Webuild and Vianini Lavori.

At a depth of 45 m, with perimeter walls retaining the excavation reaching 85 m, the new Piazza Venezia station will be a museum among museums, just a few steps away from the Colosseum and the Imperial Forums.



Focus

The dam is located upstream of Kingsport, TN (USA) and is owned and managed by the Tennessee Valley Authority. A sinkhole was discovered near the downstream toe of the dam in 2014, with potential dam safety issues. In 2015, TVA announced plans to construct the Boone Dam Internal Erosion Remediation Project, involving works to mitigate potential dam risks and to return to normal operations.



TREVIICOS carried out the installation of the cutoff wall for the Boone Dam Internal Erosion Remediation Project in Tennessee, USA



Trevi carried out the foundation works for the new Arena Santa Giulia, the multifunctional arena designed by architect David Chipperfield, which will host the ice hockey competitions for the 2026 Winter Olympics in Milan and Cortina. Trevi created 883 piles with the technology CFA, of which 340 with a diameter of 1000 mm and the remaining 543 with a diameter of 1200 mm.

Focus

At the Santa Giulia construction site, **100% of the waste material produced by the excavation works was recovered**, thus becoming a product used for filling in road construction and civil works.





Trevi – Herbert Hoover Dike, USA

TREVI Group



Focus

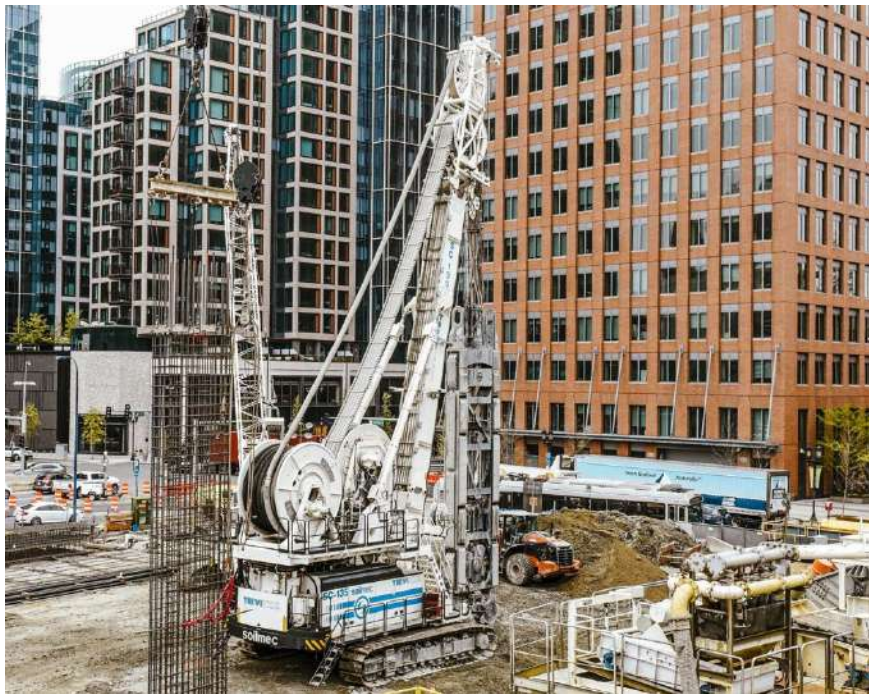
Treviicos is renovating and restoring a structure that has been listed in the Top 10 dams in need of reconstruction by the **US Army Corps of Engineers** since 2007.



The cutoff wall was built using both conventional and jet grouting construction techniques, with depths ranging from 15 to 24 metres.



Trevi – South Station skyscraper in Boston, USA



Focus

The new skyscraper of Boston's South Station will be 51 stories high and will be used for both executive (office) and residential use.



The new tower will rest on eight super columns which in turn will be supported by a continuous series of foundation elements that are 0.91 meters thick and over 36 meters deep into bedrock.



Focus

In order to strengthen Hong Kong's status as an international aviation hub and to meet the city's long-term air traffic demand, Hong Kong International Airport is expanding to become a three-runway system.

Building a three-runway system (3RS) is equivalent to building a new airport next to the existing one.

Trevi carried out soil consolidation works, mainly using jet grouting technology, to reclaim the surrounding areas and thus make them available for the work needed to expand the airport.



Focus

The new Brescia East-Verona railway line is about 48 km long, crossing two regions, 11 municipalities and mostly running alongside the A-4 freeway.

The most complex and articulated project of the entire work is undoubtedly the Lonato Tunnel.

The purpose of Trevi's work was to pre-consolidate the soil surrounding the new Lonato tunnel in order to allow the passage of the TBM without causing subsidence.



Trevi has executed:

- Offshore foundation piles with a diameter of 3000 mm.
- Onshore piles with a diameter of 2500 mm.

Focus

The Chacao Channel Bridge, also known as the Chiloé Bicentennial Bridge, will be **the longest bridge in South America** with its 2,635 metres.

The original design for the bridge includes three concrete towers (*two 179.6 m high towers and a 160.77 m high south tower*).

The bridge is designed to withstand winds of over 240 km/h and strong sea currents.





Trevi – Drammen High Speed Rail Tunnel, Norway



Focus

The project is complex, as it passes through a densely populated residential area characterized by heavy traffic, with numerous interferences on steep surfaces.



Trevi carried out the foundation and consolidation works for the new Drammen railway tunnel, which forms part of the Vestfoldbanen section from Drammen to Kobbervikdalen. The project consists in the construction of the new 10 km double-track railway, 7 km of which will be in a tunnel.



Focus

The Cebu-Cordova Bridge is a toll bridge expressway under construction in Metro Cebu, Philippines, that will connect Cebu City and Cordova.

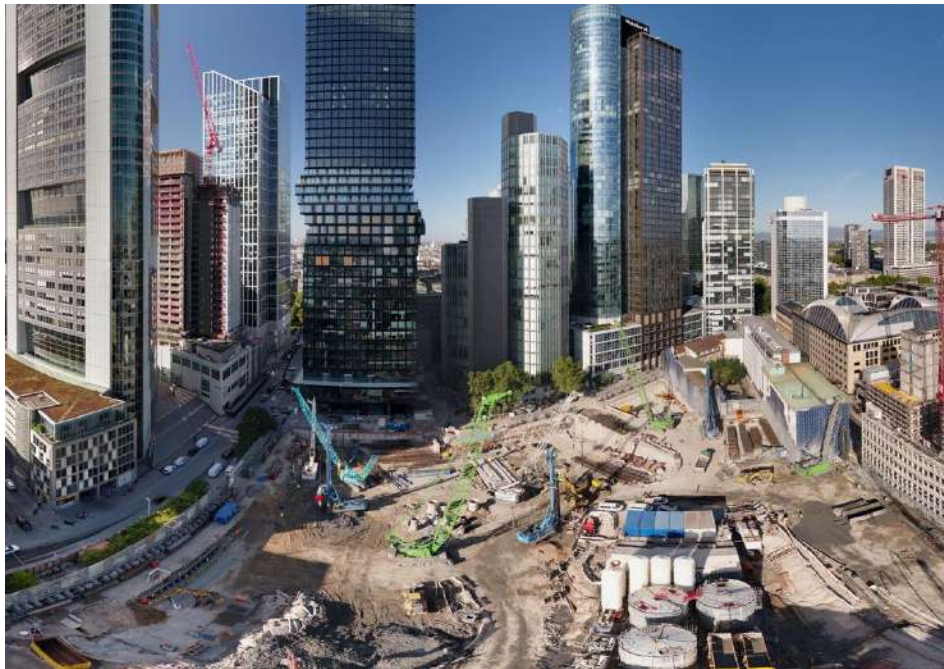
The bridge, 8 kilometres long and 27 metres wide, will provide an alternative route to the Mactan Cebu International Airport, serving at least 40,000 vehicles per day.



Onshore and offshore foundation piles up to a diameter of 2500 mm were built.



Trevi – Four Frankfurt, Germany



Focus

FOUR Frankfurt" is the name of the redevelopment project of the former Deutsche Bank area in the heart of Frankfurt. Completed in 2025, the project transformed the city center with four multi-functional skyscrapers reaching heights between 104 and 233 meters.



In Frankfurt, Trevi designed and built all foundation works for the new building complex 'Four Frankfurt'. Various technologies were used including, diaphragms, foundation piles and anchors.



Focus

L'Anse du Portier, now known as Mareterra, is an engineering and architectural project designed by Renzo Piano Building Workshop and other prominent firms, which transformed six hectares of sea into land, expanding the territory of Monaco. Inaugurated in December 2024, the project was successfully completed, delivering an ambitious land reclamation that created a new, prestigious and sustainable district.



Trevi implemented the consolidation works through the jet grouting technology in the transition area between the current coast and the new area.



Focus

'Grand Paris Express' is a group of new rapid transit lines under construction in the Île-de-France region of France.

The project includes four new lines, as well as extensions of the existing lines 11 and 14. **It will be 200 kilometres long.**

Below, the render of the new Saint Denis Pleysel station



In the four jobsites where Trevi has operated, multiple technologies were used for the execution of the foundation works.

| Soilmec – A complete product range

Tiger & Cougar line
Hydromills for diaphragm walls



SR line
Hydr. rotary rigs for large diameter piles



SF line
Continuous Flight Auger drilling rigs



SM line
Microdrilling Rigs & E TECH line



ST line
Tunneling Rigs



SC line
Foundation Cranes



Soilmec – Hydromills: SC-135 Tiger and SC-130 Tiger Plus



Focus

The SC-135 Tiger can reach a depth of 120 metres.

The new hydromill line was developed based on tests carried out at the Gualdo (Italy) test field, where a record depth of 250 metres was reached for the first time in the world in 2011



The new SC-130 Tiger Hydromill is working in the heart of Rome for the new Piazza Venezia station of the Metro C. Other latest generation Soilmec Hydromills are working on the North East Link Project in Melbourne (see photo on the right)

Soilmec – Large Diameter Pile: the BLUE TECH line



Focus

The Blue Tech line was developed with an architecture aimed at energy saving, noise reduction as well as high performance

- **multifunctional**
- **more efficient**
- **with higher productivity**
- **with lower consumption**



The SR-45, the first machine of the new Blue Tech Plus line launched at Bauma 2025, embodies Soilmec's strategy aimed at the sustainable modernization of foundation job sites, through solutions that combine power, intelligent control, and reduced environmental impact.

| Soilmec – Crawler Crane: SC-130 HD



Focus

Heavy duty hydraulic crawler cranes used both as service cranes and in versions equipped for the application of different foundation technologies.

| Soilmec heavy duty hydraulic crawler cranes at work

| Soilmec – Micro drilling rigs: SM-11 and SM-15



Focus

The Micropile line includes:

- Hydraulic microdrilling rigs designed to perform **micropiles, anchors, water wells, corings, consolidations with jet grouting, soil investigation and geothermal applications.**
- Hydraulic rigs for **sub-horizontal consolidations of large section tunnels.**



Some of the Soilmec microdrilling rigs machines in action.

| Soilmec – Micropile: the brand new eTECH line



Focus

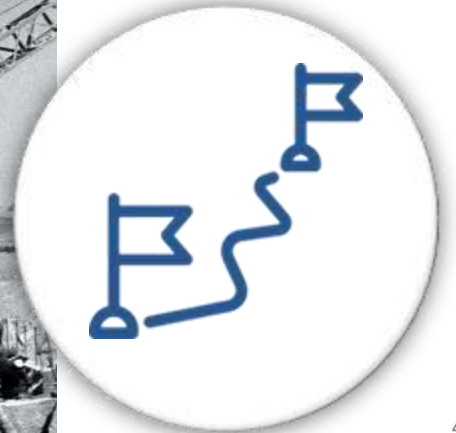
The new eTECH line represents the first step towards the development of an electrified Soilmec range that responds to market demands in terms of reducing pollutant and noise emissions, increasing efficiency and reducing operating costs.



SM-13e eTECH previewed at the international exhibition BAUMA (Munich) and currently in action in Piazza Venezia in Rome for the new Metro C station.

ZEROEMISSION

Milestones



| Projects that have made history in ground engineering around the world

1967: first job abroad _ Nigeria



Brazo Largo bridge _ Argentina



The Leaning Pisa Tower Consolidation _ Italy



World Trade Center _ New York_USA



Wolf Creek dam rehabilitation _ USA



Consolidation of LPV-111 _ USA



Costa Concordia recovery project _ Italy

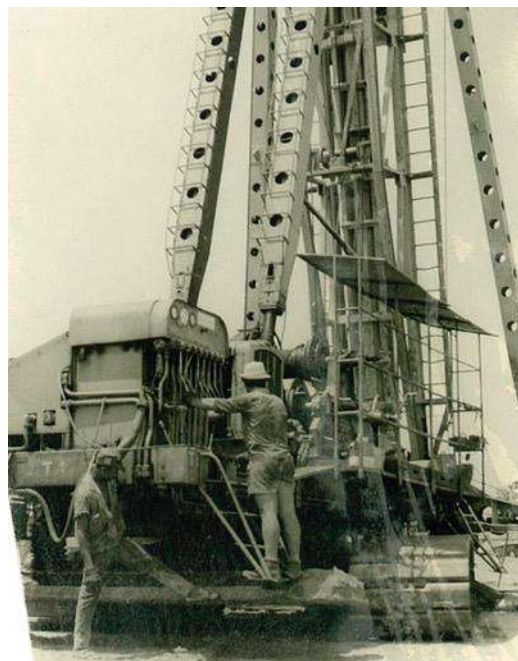


Restoration of Lungarno Torrigiani _ Italy



Mosul Dam Project _ Mosul _ Iraq





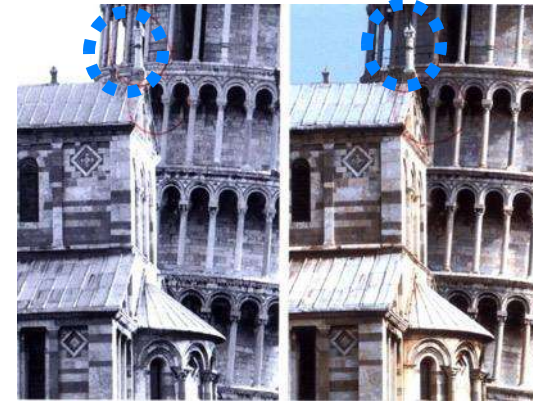
Focus

On this occasion, the MT machine (*photo left*) for driven piles was used. The rig is still on display inside the company premises today (*photo below*).



In 1967, Trevi carried out its first major work abroad: the major road artery in Lagos, the capital of Nigeria. From that moment on, Pali Trevisani began its 'expansion' abroad.

| Trevi – The consolidation of the Leaning Tower of Pisa - Italy



1990

2001

Focus

A 10-year project that held the whole world in suspense.

A special consortium was set up, consisting of the world's most distinguished experts, led by the Trevi company itself.

At the end of the work, it is estimated that the intervention extended the Tower's lifespan by about 200 years.

In the photo above: President Ciampi visiting the construction work.



Foundation works for the reconstruction of the World Trade Center and metro station

Trevi – Costa Concordia recovery project, Giglio Island - Italy



The main phases of the ship's parbuckling operation are shown in sequence:



Trevi – Consolidation of the LPV-111 embankment in Florida, USA



Consolidation work on the main levee to "defend" New Orleans after the devastation caused by Hurricane Katrina in 2005

Trevi – Lungarno Torrigiani embankment protection works, Italy



Focus

Work carried out in record time, using innovative technology.



In the photo below: Italian President Mattarella's visit to the recently completed works while he is among the Trevi staff.



The structural consolidation of the work was aimed at:

- ensure the safety of the Poggi Gallery and the existing buildings;
- minimise pressures and stresses on the existing wall by improving its stability;
- guarantee water protection against the flooding of the Arno river;
- restore the sewerage and road network along the Lungarno.

Trevi - Securing the Mosul Dam, Iraq



Consolidation and waterproofing of the dam foundations by means of cement mix injections from the crest and tunnel. For the occasion, a GIS (*Geographical Information System*) based control and recording system of the injection parameters was developed, which allows extrapolations and detailed analyses on all the various parameters.

Other interventions include the rehabilitation of the outlet tunnels and ancillary works.

Focus

The intervention was performed in a context of war. For this reason the Italian Government sent 450 soldiers to protect the Trevi Group personnel involved in the project.



The project won the DFI's 2022 «**Outstanding project Award**»



| Our strengths



The new eTECH line

The project was born with the aim of creating the first electric drilling rig, evolving that path begun with the arrival of the first electrically powered rigs for indoor and tunnel drilling and consolidation work.

The SM-13e is the first machine with electric motor power supply and digging actuators, available with both battery and cable power.

This is **the first step in the development of an entire range of electrified SOILMEC machines, the new e-Tech line.**

ZERO2MISSION



BLUETECH PLUS



The new Blue Tech Plus line

The new Soilmec line that revolutionizes energy efficiency, reduces costs and emissions, and raises safety and productivity to new standards. The SR-45 BT Plus is the first machine in this line.



Our strengths – Investing in services

The DME (*Drilling Mate Experience*)

The new Soilmecc training tool is a real simulator developed on the Blue Tech line cab.

Thanks to the simulator software, each drilling stage is reproduced in an extremely realistic way, allowing students to improve their operator skills in a totally safe environment.

**A great opportunity
for our customers.**



The DMS 4.0 (*Drilling Mate System*)

Electronic system, accessible via APP, for controlling drilling equipment, production supervision and fleet management.



| Our strengths – Investing in People



Creation and development of a corporate training school, **the Trevi Group Academy (TGA)**, dedicated to supporting and directing all managerial and management training of the Group's human resources, also using new methodologies and communication tools.

Through TGA, the company supports the Manager who, unlike in the past, personally defines and manages the training plan for employees.



FTA development (Foundation Technology Academy)

International training project for those wishing to enter the foundation sector.

It is aimed at those who already work in the field, but also those who wish to increase their knowledge and specialisation in foundation technology and related equipment.

We have organised 480 courses involving over 2300 people so far.



Safety project "Safety Always"

In 2024, Trevi Arabian Soil Contractor Ltd. received the **"Best HSW Performance November 2024"** award, which is granted to subcontractors demonstrating the best Health, Safety, and Welfare performance on the **NEOM THE LINE** project in Saudi Arabia.

Additionally, within the framework of the **EFFC**—European Federation of Foundation Contractors, Trevi Spa won first prize in the **Annual Safety Award 2024** for its internal program *"Prenditi a cuore"* (Take Care to Heart), in the category of *worker well-being*.

| Our strengths – Promoting sustainability



External Recognition	External Recognition	ESG Supply Chain Rating
<p>▶▶ Approved the new Sustainability Disclosures defined by the CSRD Directive and integrated into the Annual Report</p>  <p>▶▶ Since 2017, The Trevi Group has been publishing the Non-Financial Statement.</p> 	<p>▶▶ For the third times “The most climate-friendly companies 2024” by Corriere della Sera and Statista</p> <p>▶▶ Trevi Group is among the best Italian sustainable companies as resulted in a survey conducted by Il Sole 24 Ore and Statista</p> <p>▶▶ Trevi Group has entered the ESG Identity Corporate Index (ESG.ICI, formerly the Integrated Governance Index)</p>   	<p>▶▶ Trevi S.p.A. obtained for the third time the Silver medal by the international certification platform EcoVadis</p> <p>▶▶ This achievement covers different Group areas: Environment, Working Practices and Human Rights, Ethics and Integrity, Sustainable Procurement</p>  <p>▶▶ Trevi S.p.A. obtained the Synesgy score</p> 



Thank you for your attention